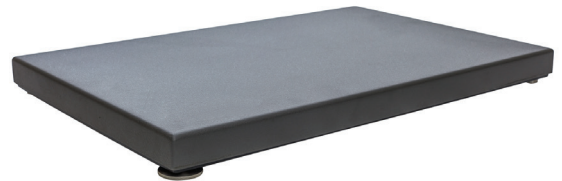


## Bertec<sup>®</sup> Force Plates

Bertec<sup>®</sup> force plates are designed for gait, balance, and performance analyses. Our patented strain gauge technology, innovative transducer designs, and quality manufacturing help you capture the highly accurate data needed for your research.

- Wide range of applications
- Variety of sizes and load ranges
- Superior electronics
- Negligible cross talk, drift and signal interference
- Ease of data collection
- Strongest industry warranty



## Configuration

model	width mm (in)	length mm (in)	height mm (in)	weight kg (lb)	load capacity 1000 lb (5000 N)	load capacity 2000 lb (10000 N)	load capacity 4000 lb (20000 N)
Portable (USB or standard output directly from force plate)							
4060-05	400 (15.75)	600 (23.62)	50 (1.97)	8 (18)	✓	✓	
5060-06	500 (19.68)	600 (23.62)	60 (2.36)	13 (28)		✓	
6090-06	600 (23.62)	900 (35.43)	60 (2.36)	23 (50)		✓	
Fixed							
4060-07	400 (15.75)	600 (23.62)	75 (2.95)	38 (84)	✓	✓	✓
4060-08	400 (15.75)	600 (23.62)	83 (3.25)	38 (84)	✓	✓	✓
4060-10	400 (15.75)	600 (23.62)	100 (3.94)	30 (66)	✓	✓	✓
4060-15	400 (15.75)	600 (23.62)	150 (5.91)	21 (46)	✓	✓	✓
4060NC*	400 (15.75)	600 (23.62)	100 (3.94)	39 (86)	✓	✓	✓
4550-08	<b>464 (18.25)</b>	<b>508 (20)</b>	83 (3.25)	38 (84)	✓	✓	✓
6012-15	600 (23.62)	1200 (47.24)	150 (5.91)	62 (137)	✓	✓	✓
6090-15	600 (23.62)	900 (35.43)	150 (5.91)	45 (99)	✓	✓	✓
9090-15	900 (35.43)	900 (35.43)	150 (5.91)	65 (143)	✓	✓	✓

\*non-conductive

## Specifications

Available in a variety of sizes and load ranges

Utilize with any motion capture system including camera-based systems using passive or active markers

Simultaneously measures three force components and three moment components about the x, y, and z axes for a total of six outputs which are used to compute the Center of Pressure (CoP)

Also available - specialized force plates, balance plates, and jump plates, measuring only the vertical force and two moments which are used to compute the Center of Pressure (CoP)

Force plate signal is fed into your choice of amplifier - digital, analog or dual digital/analog output

Digital signal output from the portable force plate can be directly plugged into a standard USB port

Digital acquisition software enables the user to collect data quickly

SDK is available for download to integrate the force plate with custom software

Custom electronics guarantee negligible cross talk, drift and signal interference from external sources

Mounted and portable force plates available

Portable force plates allow data collection in more natural environments

Strongest industry warranty - 7 years on hardware and electronics for fixed (mounted) force plates

For more information, contact Bertec at 614-543-8099 or by email at [info@bertec.com](mailto:info@bertec.com)