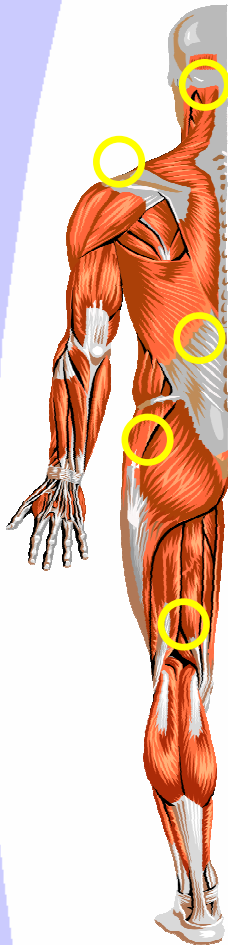


Preview: **NEW APPLICATION SOFTWARE FOR CLINICIANS**

NORAXON has developed a new software module that addresses the needs of medical doctors and physiotherapists working in clinical settings. The new module contains protocols for the 5 main joint regions of the human body. Each protocol is operated within few minutes and automatically creates an analysis report with interpretation items and therapy proposal.



Cervical Region

Shoulder Region

Low BackRegion

Hip Region

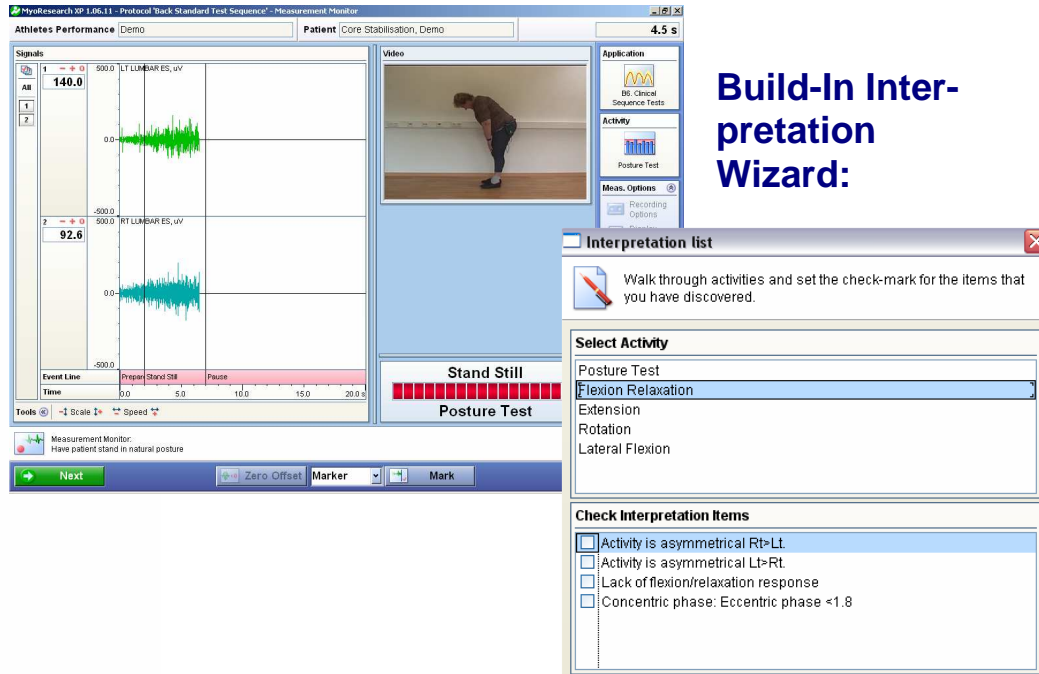
Knee Region

NORAXONs unique computer assisted test and training assistance guides you through the whole test by screen and voice commands. A newly developed interpretation wizard helps to create a meaningful clinical real time results, which are ready for immediate print-out.

The high-lights:

- ✓ **Extremely User Friendly**
- ✓ **Quick and Meaningful Evaluations**
- ✓ **Real Time Video Synchronization**
- ✓ **Unique Interpretation Wizard**
- ✓ **Voice Prompts**
- ✓ **Continuing Education Series**

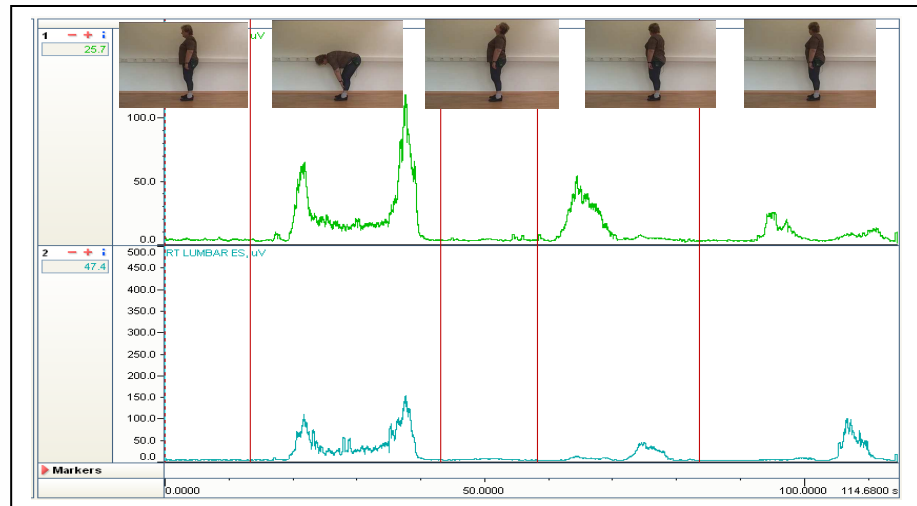
Video and voice assisted recording schemes:



The screenshot displays the 'Athletes Performance' software interface. On the left, there are two EMG signal traces for 'LT LUMBAR ES, UV' and 'RT LUMBAR ES, UV'. The top trace shows a peak of 140.0, and the bottom trace shows a peak of 92.6. A video window in the center shows a patient performing a 'Stand Still' posture test. On the right, an 'Interpretation list' window is open, showing a 'Select Activity' dropdown menu with 'Flexion Relaxation' selected. Below it, a 'Check Interpretation Items' section contains several checkboxes, including 'Activity is asymmetrical Rt>Lt', 'Activity is asymmetrical Lt>Rt', 'Lack of flexion/relaxation response', and 'Concentric phase: Eccentric phase <1.8'.

Build-In Interpretation Wizard:

Sample of Back Sequence Protocol:



Please check our webpage www.noraxon.com for the official release date.